

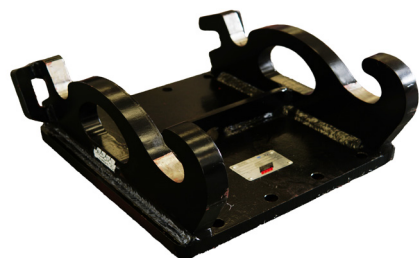


# 2024 KPL-SERIE

**Kopfplatten für mechanische Schnellwechsler**

**Brackets for mechanical Quick Coupler**

1994 **30** 2024



**CW00-CW70**

System Verachtert

AC02-AC14



**MS01-MS21-25**

System Lehnhoff

AC02-AC08



**S30-S70**

System Engcon, Steelwrist, OQ

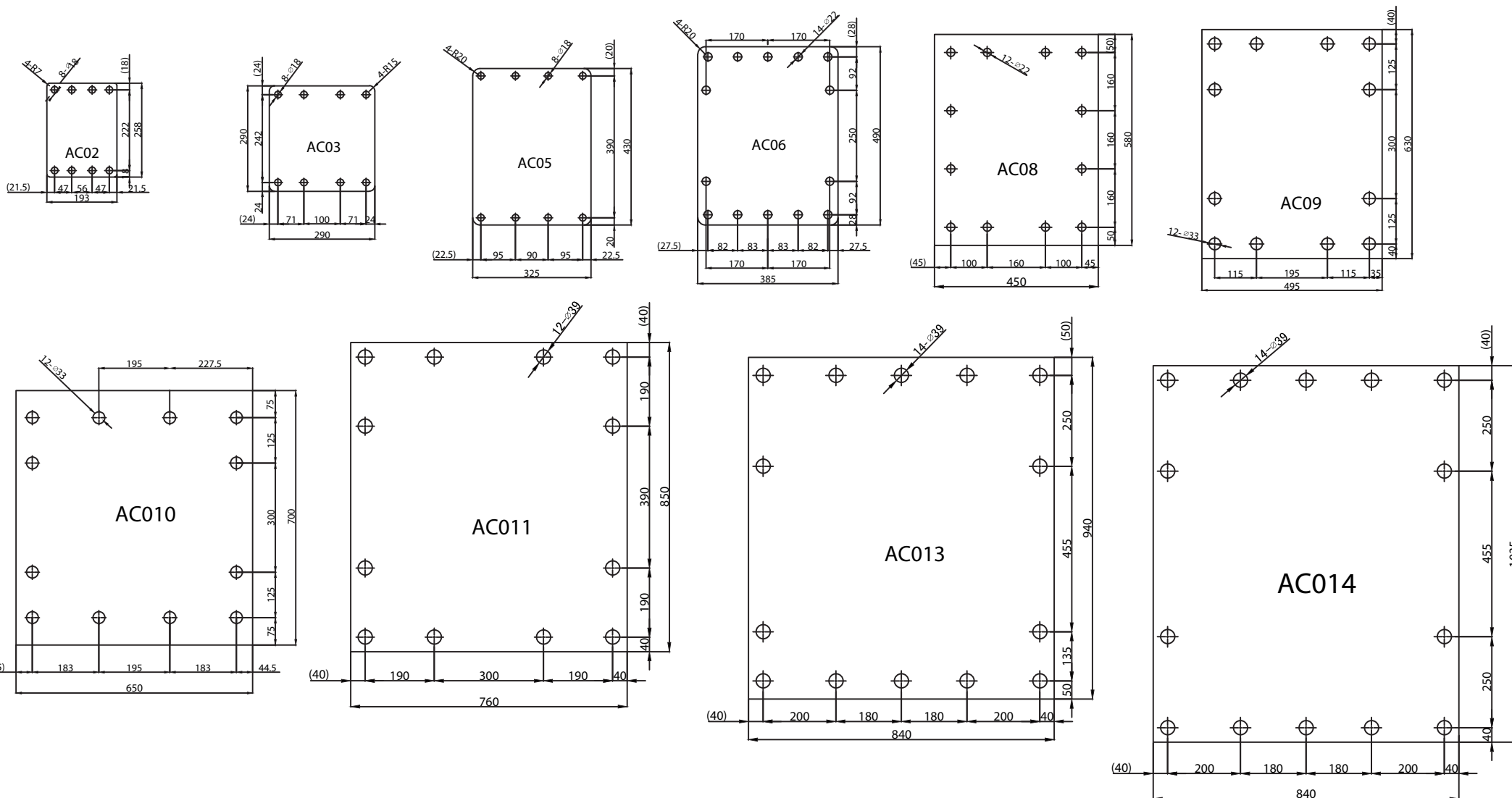
AC02-AC14



**SW33-SW44**

System Liebherr

AC02-AC10





**KPL SERIE**  
**Kopfplatten**  
 für mechanische Schnellwechsler  
 - System Verachtart  
 - System Lehnhoff  
 - System Liebherr  
 - System Engcon, Steelwrist, OQ

**KPL SERIES**  
**BRACKETS**  
 for mechanical Quick Couple  
 - System Verachtart  
 - System Lehnhoff  
 - System Liebherr  
 - System Engcon, Steelwrist, OQ



	AC01	AC02	AC03	AC05	AC06	AC08	AC09	AC10	AC11	AC13	AC14	AC15
ACDE®Europe KPL Serie Kopfplatten / Brackets		KPL-CW00	KPL-CW05	KPL-CW10	KPL-CW10	KPL-CW10	KPL-CW40-AC08+AC09		KPL-CW10	KPL-CW10	KPL-CW10	
		KPL-CW05	KPL-MS03	KLP-MS03		KPL-MS08	KPL-S60-270	KPL-S70-270				
		KPL-MS01	KPL-S40-200	KPL-MS08-AC05+AC06								
		KPL-MS03		KPL-S40-200								
		KPL-S30-150		KPL-S40-240-AC05+AC06								
		KPL-S30-180			KPL-S45-290							
					KPL-S50-270							
Beilite®Europe BLTB SERIES Hammers / Breakers		BLTB-40	BLTB-53	BLTB-60	BLTB-75	BLTB-85	BLTB-100A	BLTB-150	BLTB-165	BLTB-190	BLTB-210	B LTB-255
		BLTB-45		BLTB-70			BLTB-125A	BLTB-155	BLTB-175	BLTB-195		
							BLTB-135A			BLTB-200		
							BLTB-140A					
ACDE®Europe ASG Series / (ASG-ND Series) / Greifer / Grapples		ASG/(ND)/-80	ASG/(ND)/160	ASG/(ND)/400		ASG/(ND)/600	ASG/(ND)/800	ASG/(ND)/2300				
		ASG/(ND)/105	ASG/(ND)/280	ASG/(ND)/500		ASG/(ND)/700	ASG/(ND)/1000	ASG/(ND)/2300				
							ASG/(ND)/1090	ASG/(ND)/2900				
							ASG/(ND)/1100					
							ASG/(ND)/1200					
							ASG/(ND)/1500					
							ASG/(ND)/1800					
						ASG/(ND)/2100						
ACDE®Europe AMG Series / (AMG-ND Series) / Multigreifer / Multi Grapples			AMG/(ND)/-160-370	AMG/(ND)/-460-500		AMG/(ND)/-700-800	AMG/(ND)/-1000-600	AMG/(ND)/-2100-1200				
			AMG/(ND)/-280-400	AMG/(ND)/-500-600		AMG/(ND)/-800-600	AMG/(ND)/-1000-700					
			AMG/(ND)/-280-500	AMG/(ND)/-600-500		AMG/(ND)/-800-700	AMG/(ND)/-1500-800					
				AMG/(ND)/-600-600			AMG/(ND)/-1500-900					
				AMG/(ND)/-600-700								
ACDE®Europe ACC Series Betonzange / Concrete Crusher							ACC-20					
							ACC-25					
ACDE®Europe ASS Series Schrottscheren / Scrap Shears							ASS-12	ASS-30				
							ASS-20					
ACDE®Europe ASC Series Starre Pulverisierer / Fixed Pulverizers				ASC-360			ASC-1350-2	ASC-2750-2				
				ASC-306-R			ASC-1750-2					